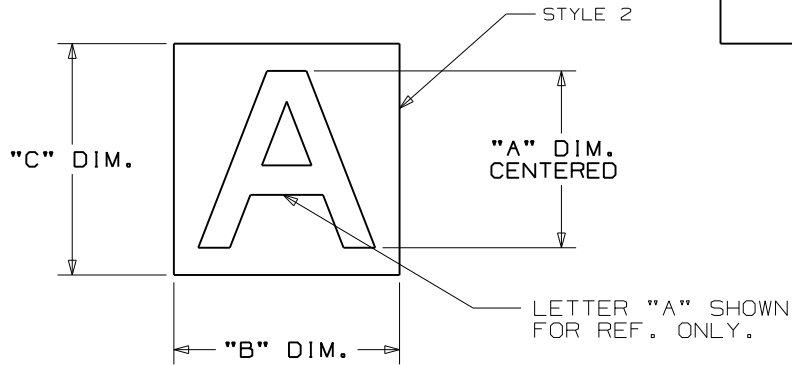
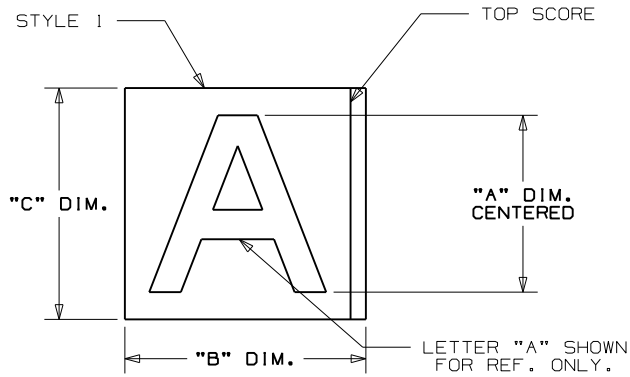


THIS COPY IS PROVIDED ON A RESTRICTED BASIS AND IS NOT TO BE USED IN ANY WAY DETRIMENTAL TO THE INTERESTS OF PANDUIT CORP.



PART NUMBERS									MARKERS PER CARD	CARDS PER PKG	LEGEND
(STYLE 1) BLACK ON YELLOW	(STYLE 2) YELLOW ON BLACK	(STYLE 2) YELLOW ON BLACK	(STYLE 1) BLACK ON YELLOW	(STYLE 2) YELLOW ON BLACK	(STYLE 2) YELLOW ON BLACK	(STYLE 1) BLACK ON YELLOW	(STYLE 2) YELLOW ON BLACK	(STYLE 2) YELLOW ON BLACK			
"A" DIM. (CENTERED)	"B" DIM.	"C" DIM.	"A" DIM. (CENTERED)	"B" DIM.	"C" DIM.	"A" DIM. (CENTERED)	"B" DIM.	"C" DIM.			
1.00 (25.4)	1.13 (28.7)	1.63 (41.4)	1.50 (38.1)	1.38 (35.1)	1.88 (47.8)	2.50 (63.5)	1.75 (44.5)	2.88 (73.2)			
PRL100BY-0 THRU PRL100BY-9	PRL150YB-0 THRU PRL150YB-9			PRL250YB-0 THRU PRL250YB-9			1	25	0 THRU 9		
PRL100BY-A THRU PRL100BY-Z	PRL150YB-A THRU PRL150YB-Z			PRL250YB-A THRU PRL250YB-Z			1	25	A THRU Z		
PRL100BY-DSH (SEE NOTE 2)	PRL150YB-DSH (SEE NOTE 3)			PRL250YB-DSH (SEE NOTE 4)			1	25	- (DASH)		
PRL100BY-BLNK	N/A			N/A			1	25	(BLANK)		
PRL100BY-18KIT	N/A			N/A			1	900	0 THRU 9, A THRU Z, L, P, R, S		
PRL100BY-36KIT (SEE NOTE 2)	N/A			N/A			1	950	0 THRU 9, A THRU Z, - (DASH), BLANK		

- NOTES:  
 1. MILLIMETERS ARE IN ( ).  
 2. "A" DIM. FOR DASH IS .375.  
 3. "A" DIM. FOR DASH IS .343.  
 4. "A" DIM. FOR DASH IS .50.

CAD FILENAME/LAYERS 100923NC\_DC\_C10672/01D

PANDUIT CORP. TINLEY PARK, ILLINOIS

CUSTOMER DRAWING  
 PRL\*\*\*-\* REFLECTIVE MARKERS

UNLESS OTHERWISE SPECIFIED,  
 DIMENSIONAL TOLERANCES ARE:  
 (.X) ± .12 (.XXX) ± .025  
 (.XX) ± .062 ANGLES ±



UNLESS OTHERWISE SPECIFIED,  
 ALL DIMENSIONS ARE GIVEN  
 IN INCHES, THIRD ANGLE PROJECTION.

DRAWN BY  
 RVU

MAT'L:

SCALE  
 NTS

DATE  
 3/25/08

GMRS\*  
 VINYL

DRAWING NO.

C10672

DWG  
 A  
 SIZE

REV	DATE	BY	CHK	DESCRIPTION	ECN	R	CUST	SUP
3	6/15/09	RVU		1.13 was 1.130, 1.38 was 1.380, & 1.75 was 1.750. Remove 5°.	5768	R		
2	6/04/09			VOID				
1	11/21/08	RVU		ADD NOTES 2, 3, 4. ADD "SEE NOTE 2, 3, 4, 5" ON TABLE.	5613	R		
0	3/25/08	RVU		DRAWING RELEASE	5368	R		